

C.7
Double

The first staff of music is in treble clef with a key signature of two sharps (F# and C#) and a common time signature (C). It begins with a 'Double' instruction. A bracket labeled 'C.7' spans the first six measures. The melody consists of eighth and sixteenth notes, with some slurs. The bass line features chords and single notes, including a 'p.' (piano) dynamic marking.

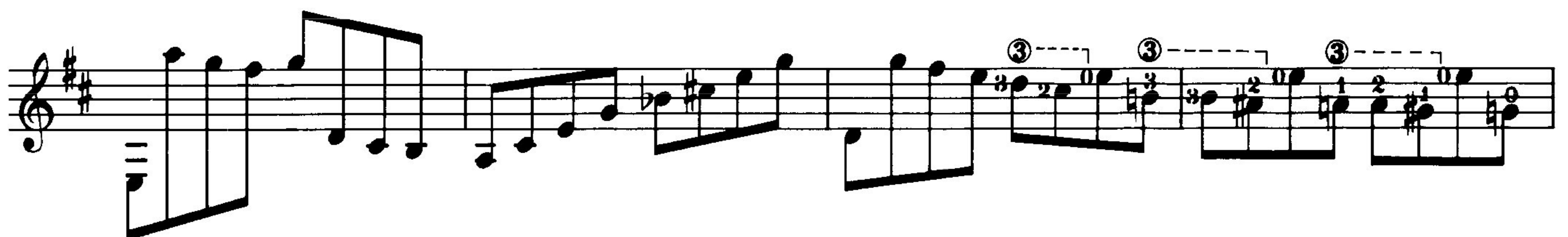
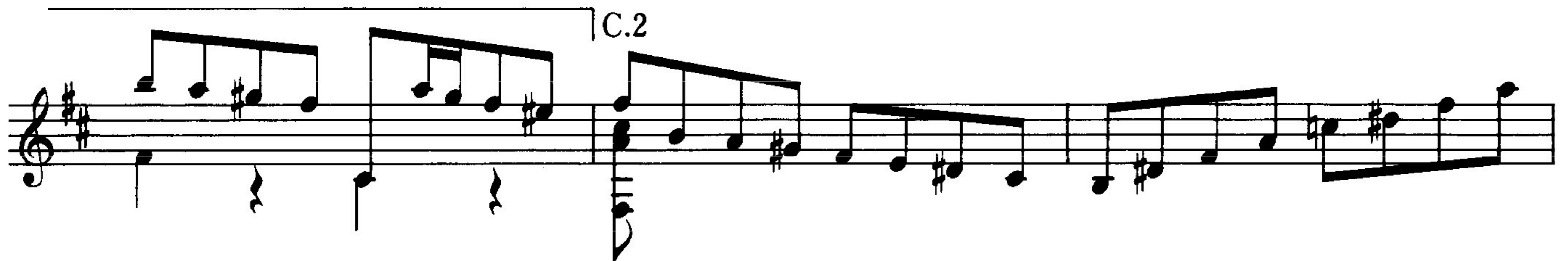
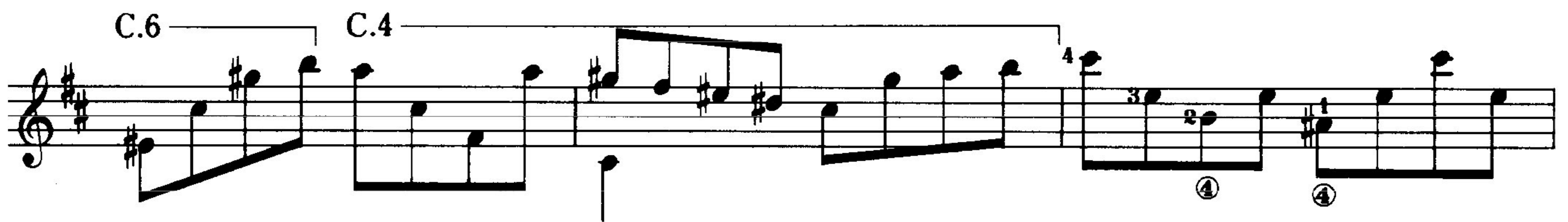
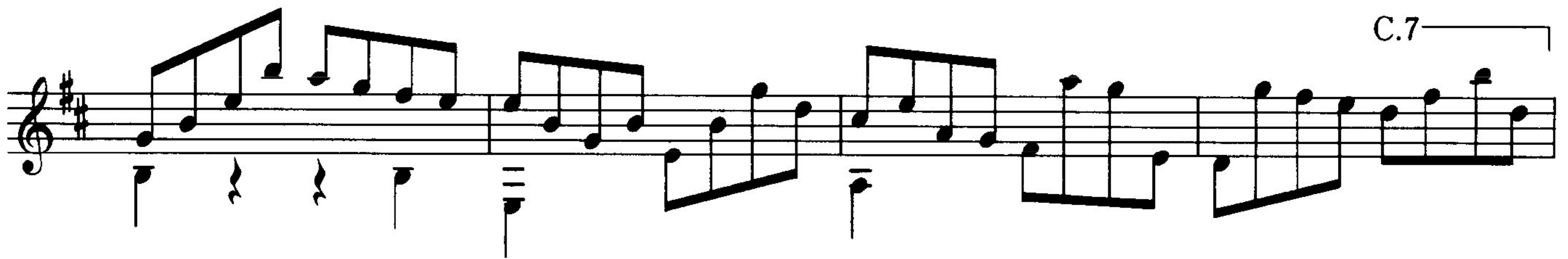
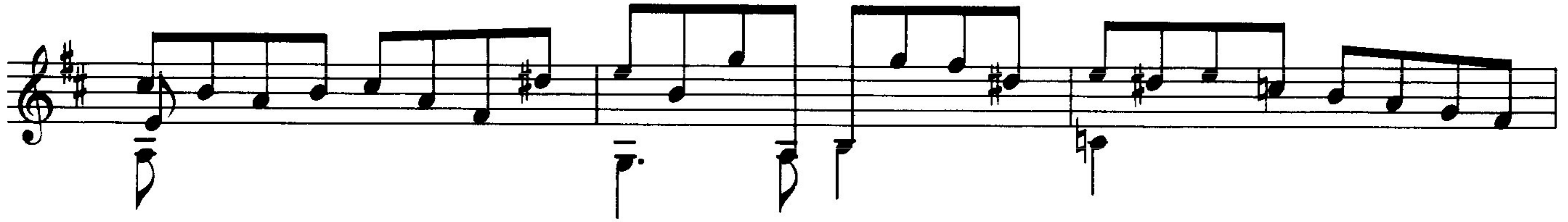
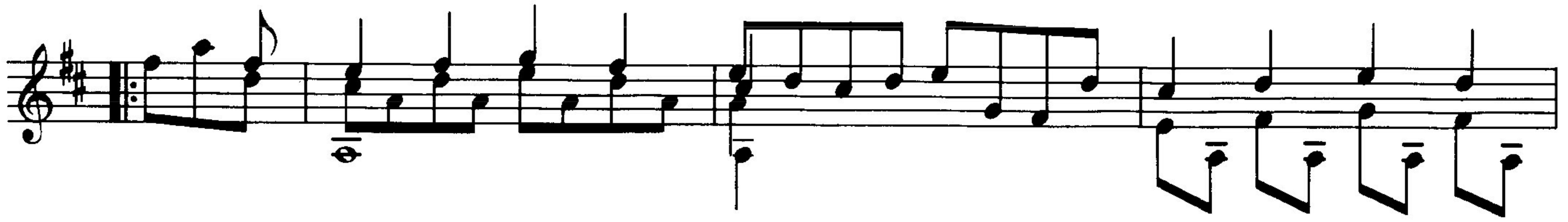
The second staff continues the melody with eighth and sixteenth notes. A 'p' (piano) dynamic marking is present at the beginning.

The third staff continues the melody. Fingering numbers (1, 2, 3, 2, 0, 2, 0) are placed above the notes in the middle section.

The fourth staff continues the melody. Fingering numbers (3, 4, 2, 3, #2, 1, 0, 1, 4, 3, 3) are placed above the notes.

The fifth staff continues the melody. Fingering numbers (2, 4, 1) are placed above the notes at the end of the staff.

The sixth staff continues the melody. Fingering numbers (1, 2, 4, 2, 3, 1, 4, 2, 1, 0, 0) are placed above the notes. A dashed line with circled numbers 1 and 2 indicates a first ending. The staff concludes with a repeat sign (double bar line with dots).



C.1

C.4

C.7